



ART TAHOE TOUR 2009

Open Studio Tour
July 10, 11 and 12
July 17, 18 and 19
10:00 am - 5:00 pm

32 Artists Week One, 29 Artists Week Two

Free
Admittance



Donations to
NTA Accepted



ARTour Exhibit Opening Reception

Thursday, July 9, 2009
5:00 - 7:00 pm
North Tahoe Art Center
Tahoe City, California

Open Studio Tour

Friday, Saturday & Sunday
July 10, 11 & 12
July 17, 18 & 19
10:00 am - 5:00 pm
Free Admittance

ARTour Gallery Exhibit

July 2 through August 2, 2009
Exhibit of ARTour Artists
North Tahoe Art Center
Tahoe City, California
Hours: 11:00 am - 6:00 pm
Closed on Tuesdays



Welcome to Tahoe ARTour 2009! Thirty-two talented local artists will open their studios to the public this year throughout the North Tahoe-Truckee region for two weekends of celebrating the visual arts! ARTour is a self-directed studio tour offering numerous opportunities to meet artists in their work environment, to learn about a variety of art mediums, and to buy directly from the artists. In its sixteenth year, Tahoe ARTour is proud to welcome many returning artists as well as several new ones. A variety of art mediums are featured, including watercolor, acrylics, weaving, oil, glass, printmaking, textiles, jewelry, pastels, ceramics, pottery, sculpture, mixed media, woodworking and photography. Many of the artists are well established and nationally known with work in major galleries throughout the United States. Others are promising emerging artists. All have been juried into ARTour 2009.

North Tahoe Arts will kick off Tahoe ARTour 2009 at the Art Center in Tahoe City with an Opening Reception on Thursday, July 9 from 5:00 to 7:00 pm. Browse the galleries for a preview, meet and chat with the artists on the Tour, and enjoy wine and appetizers. The Opening Reception and Studio Tour are free; however, memberships to support North Tahoe Arts are greatly appreciated. We look forward to seeing you at the Reception and on the Tour, which will again run for two weekends, July 10, 11, and 12 and July 17, 18, and 19. Studios will be open from 10:00 am to 5:00 pm.

North Tahoe Arts is a non-profit 501(c)(3) organization with a mission to support the arts in the North Tahoe-Truckee communities through exposure, education and participation. In our twentieth year of operation, NTA hosts a variety of programs, exhibits, and activities. The ARTour Open Studio Tour and the kids' ART camp are two of our most popular summer events. The North Tahoe Plein Air event in September draws plein air painters from all around the west. Monthly exhibits in the two NTA galleries are inaugurated with first Friday opening receptions. The exhibits and the ARTisan Fine Art and Gift Shop offer visitors and art appreciators an opportunity to purchase work by local artists year-round.

The North Tahoe Art Center is located at 380 North Lake Blvd in Tahoe City (next to the fire station). You can visit our website, www.northtahoearts.com or call 530-581-2787 for more information.

Sponsors of North Tahoe Arts and ARTour 2009 include



Tahoe ARTour 2009 • Artist Statements

All studios open both weekends unless otherwise noted ★



Jennifer Antonucci B2

Pastels and Watercolors
Jenny's paintings reflect her love of the high country in and around Lake Tahoe where she has lived and hiked for 34 years. With a representational style, Antonucci uses colorful pastels and watercolors to capture local scenery and wildlife.



Tom Beebe D3 Artistry in Wood

Woodwork
Connecting dots between furniture, craft, and art, Tom creates original furniture and functional art pieces. Beebe constantly explores new techniques and styles to incorporate curves, inlay and marquetry into his work. His range is from subtle to bold and from traditional to contemporary. www.TomBeebeConstruction.com

Donald R. Britton C3

Oil
Don's highly representational oil painting focuses on landscapes of the West from Southern California to Canada. Yet the body of his work is of four areas: Tahoe and the Northern Sierras, Yosemite, the Tetons and the Grand Canyon. In scale it ranges from small, quiet streams to magnificent panoramas.



Bill Cooper & JoAnn Lippert C2 Wild Encounters Photography

Photography
Bill and JoAnn are cultural photographers. They travel to remote and primitive areas of the world to photograph the colors, textures and energy of world cultures. Their goal is to preserve through photographs, information about other cultures and to create a better understanding of the rich diversity of our planet.



Carol David D8

Pastels
★Open First Weekend Only★
Carol's pastel drawings are inspired by observing people in an everyday setting. As the light and dark shadows fall across the subject she sees a design and focuses on value patterns. Her work captures a mood which reflects the passion she feels for the subject.



Don Eagling A6

Acrylic & Oil
Don is an impressionist painter of land and seascapes featuring the Sierra and Cascades, local scenes, and the California coast. www.dgeagling.com



Dayna Galletti F1

Ceramic
Dayna creates whimsical and one-of-a-kind ceramics, platters, tiles, vases, beasts and characters of every persuasion. Her work is filled with humor and reflects her unique style.



Diane Hub A5

Oil Painting
Diane's paintings touch so many people because she captures the very moment of time when we say, "What a beautiful day!" Her use of color is that of a true Impressionist Master and focuses on Idyllic Romanticism. Classically trained and now enjoying a lifetime of thoughtful observation in the Sierra Nevada.



Susan Gross D6

Printmaking
Sue's new work is an exploration in light and color. Sue uses block print and monotype printing techniques in her new work, some of which highlights the time of day when the sky is ablaze in color and the horizon is black. Sue has also been experimenting with monotype printing, a technique that entails painting with special monotype paints and transferring that image onto wet paper to produce a one-time print.



Elaine Jason A2

Constructivist Sculpture & Neon
★Open First Weekend Only★
Jason builds her strong constructivist abstract sculptures by combining curved organic shapes and architectural forms that she cuts from wood and masonite. In many of her unique sculptures she incorporates neon tubes that she designs and also incorporates found objects and interesting pieces of wood she finds in lumber yard dumpsters.

Cherie Keep F2

Glass Studio
Cherie Keep's unique glass creations blend art with functionality. Each piece is designed by fusing vibrant colored glass in a variety of shapes and textures bringing the colors of nature into her art. Pieces vary from home décor, to distinctive tableware and glass vessel sinks.



Pamela Hunt Lee B8

Acrylic, Watercolor, Semi-Precious Jewelry
In her lakefront studio, Pamela creates artwork which reflects the natural beauty of the world around her. With nature as her muse, the Lake Tahoe environment is portrayed in her jewelry, paintings, giclee prints and note cards. www.pamelahuntlee.com



Jesse Martin D1

Ceramics
Jesse split's his endeavors in clay between an elegant style of pottery and ceramic sculpture that is abstractly figurative. The pottery has been evolving quickly over the last three years and pleases him. Good sculpture is always a struggle and that makes it worth the making.

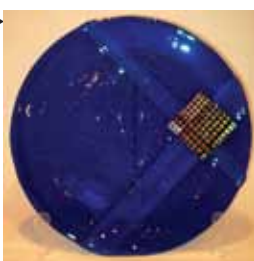
Cathy McClelland B6

Acrylic
Cathy's artwork reflects the love she has for nature, cross cultural mythical subjects, magical and sacred places and symbols. She creates from her heart and imagination. Her medium is acrylic, using both airbrush and hand to enhance and detail her painting, giving her artwork a feeling of depth that wants to be explored. www.cathymcClelland.com



Lynn McGeever A4

Fused glass
Lynn is passionate about glass and has explored many facets used in the creation of art glass. Each piece is an original design, is hand crafted and signed by the artist. Lynn has tried her hand at glassblowing and makes many of the glass inclusions she uses in her work. Lynn's current work includes "mosaic inspired" fused glass.



Robert Mimiaga C4

Travel and Landscape Photography
Bob travels extensively, having visited 5 continents' in recent years capturing their landscape, architecture, wildlife & culture. He has continued to travel the US this last year with numerous new and larger images.



Nancy Louise Olson B5

Multimedia Wearable Arts
Wearable art is Nancy's way of connecting with the natural world. Recently published in a national magazine, she has attained recognition deserving of her wonderful talent. This ARTour season please join Nancy with what can only be described as creative mystery (and mastery) with fiber.

Heidi Reeves B4

Watercolor, Pastels
My love for painting what God has created is truly a gift. When someone's heart is touched by one of my paintings, then I feel like I am giving back to God. It's an awesome exchange and I am renewed by it every time it happens.



Lawrence & Judith Romiti C1

Art Handweavings
The artists' original pieces reflect their appreciation of nature and design by using traditional techniques and limiting their work to hand spinning and weaving natural colors and fibers. The artists are inspired by beauty in nature, especially the grandeur of Lake Tahoe.

Catherine Schaefer A3

Watercolor
Catherine is a third generation artist who has had a lifetime of successful painting. She depicts her impressions of her love for Lake Tahoe and surrounding landscapes, using deep brilliant watercolors. To Catherine, painting with watercolors is like dancing with the perfect dancer, it just flows. Nature has called her to paint its beauty the way she sees it.



Fred Noerdlinger F3

Watercolor and Mixed Media
Fred's watercolors can be described as bold and contemporary. He has incorporated strong value changes with expressive brush strokes to create depth and movement. His pieces glow with over twenty layers of color. He has recently added iridescent watercolors to his works as well as a variety of rice papers. The combination of the two has given way to a large variety of new and unique works.



Charlotte Patterson B3

Photography
Charlotte Patterson photographs all aspects of nature: animals, landscapes, water, trees, flowers, textures of nature.



Carole Sesko D4

Acrylic and Mixed Media
Contemporary paintings and mixed media collage, rich in texture, bold and colorful. Carole also creates functional art, including boxes, mirrors, and small sculpture. Carole's art studio is located in a historic residence overlooking downtown Truckee, which she renovated using her artist's sensibilities. Visit: www.carolesesko.com

Suzanne Smith D5

Photography, Mixed Media
Suzanne expresses herself through many forms of art including photography, mixed media, acrylics, digital art, and egg carving. She is represented by several galleries in the west. Visit her website at www.tworiversartstudio.com



Catherine Strand B7 GlasRat Art Glass

Kilnformed Glass
Catherine's art glass pieces reflect her fascination with color, light and the transformative element of fire. Her creations are fun to see and hold, are characterized by geometric and abstract patterns, and are both functional and aesthetic.



Randall Stauss B1

Oils and Watercolors
Randall's paintings often depict the everyday life found at the boat marinas of Lake Tahoe, the back streets of Truckee, and the trails around Fallen Leaf Lake. This year's ARTour show will include watercolors from recent travels and new large oils of Lake Tahoe.



Scott Thompson E3

Photography
Scott is a fine art and landscape photographer. His images are primarily of, but not limited to, the Tahoe area. Scott shoots both digitally and with traditional slide film. Large 30"x40" prints will be available for viewing, printed on Scott's 44" wide photo printer.



Deb Rose D7

Oil and/or Watercolors
Deb's latest venture has been contemporary oils and expressionistic portraiture in watercolor. She is inspired by Wolff Kahn, Ted Nuttall and the Impressionists. Her goal is tranquility and interesting balance in colors and design.



Carol Tomasic E1

Stained Glass
Carol creates unique glass art combining vibrant colors with different textures in glass including agates, shells and other found objects. Beveled glass and iridized glass are also incorporated into pieces ranging from traditional to whimsical. Cutting glass is fun; free mini-lessons given to anyone interested in learning to cut glass.

Teresa Wik D2

Pottery
Using a pottery wheel and assorted hand building techniques, Teresa creates both functional and decorative pottery. Each unique piece is designed to be bold and beautiful and to grab the viewer's eye. At the same time, the practical side of each piece is evident in the design. www.tpotspottery.com



Andy Skaff A1

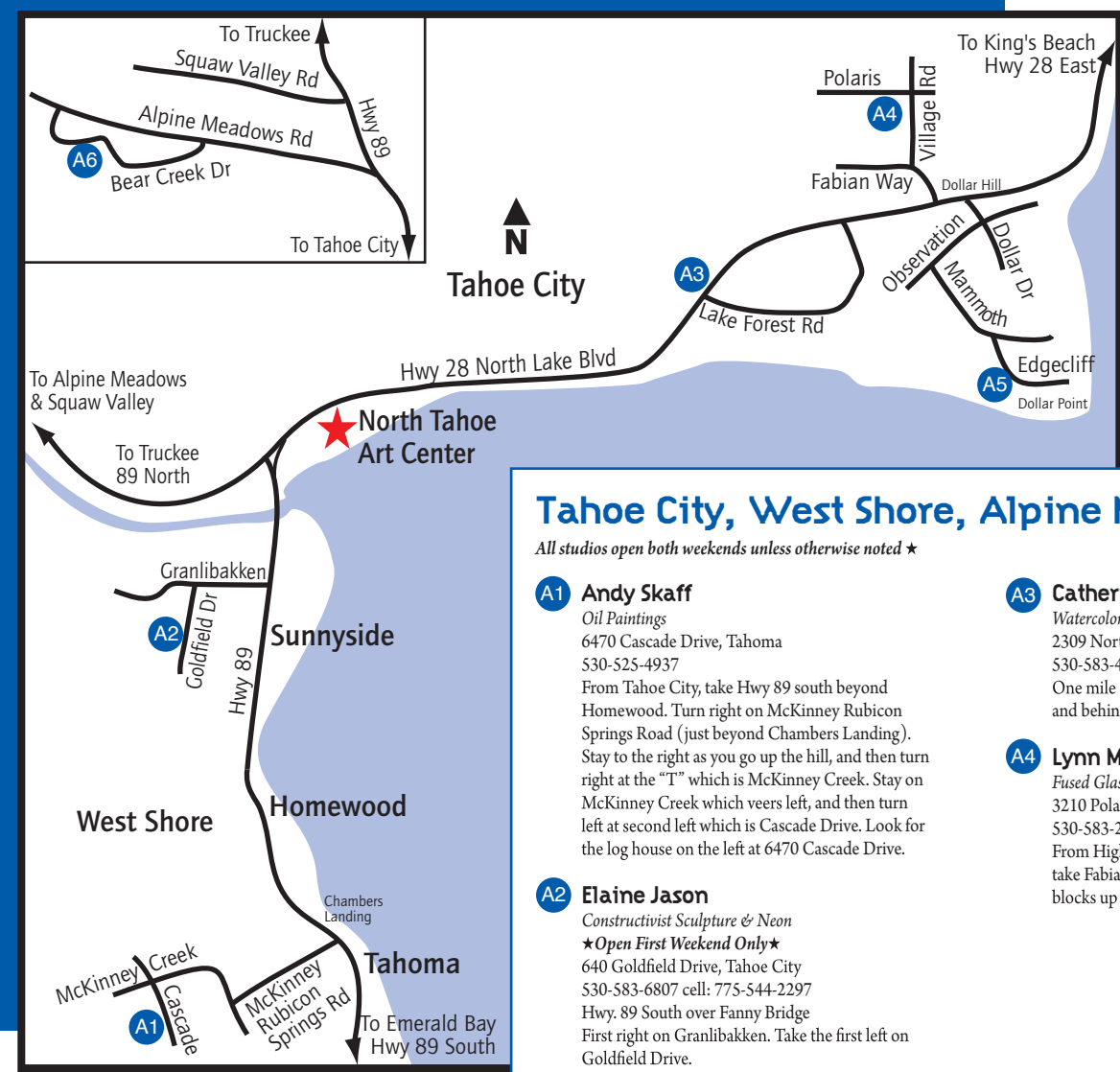
Oil Paintings
Andy Skaff paints in oils in the Plein Air tradition. His love of the West provides the inspiration for his light-filled, vibrant paintings. By working outdoors he has developed a deep appreciation for the color and beauty of the western landscape. Andy's paintings convey the clear sense of strong color and deep contrasts evident in this setting.

Open Studio Tour Maps

July 10, 11 and 12
July 17, 18 and 19
10:00 am - 5:00 pm



Map A - Tahoe City, West Shore, Alpine Meadows



Tahoe City, West Shore, Alpine Meadows Studios

All studios open both weekends unless otherwise noted *

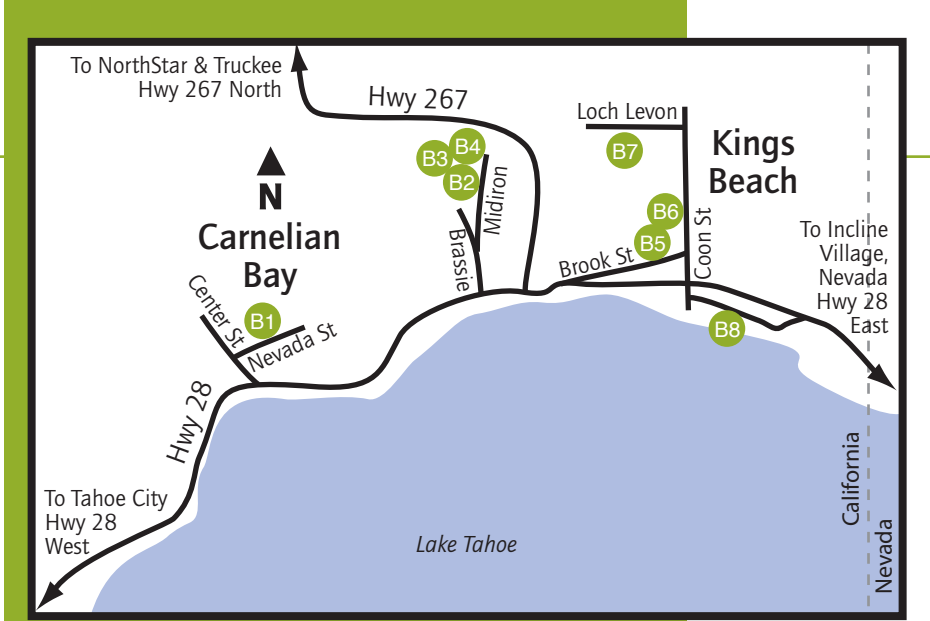
- A1 Andy Skaff**
Oil Paintings
6470 Cascade Drive, Tahoe
530-525-4937
From Tahoe City, take Hwy 89 south beyond Homewood. Turn right on McKinney Rubicon Springs Road (just beyond Chambers Landing). Stay to the right as you go up the hill, and then turn right at the "T" which is McKinney Creek. Stay on McKinney Creek which veers left, and then turn left at second left which is Cascade Drive. Look for the log house on the left at 6470 Cascade Drive.
- A2 Elaine Jason**
Constructivist Sculpture & Neon
Open First Weekend Only
640 Goldfield Drive, Tahoe City
530-583-6807 cell: 775-544-2297
Hwy. 89 South over Fanny Bridge
First right on Granlibakken. Take the first left on Goldfield Drive.
- A3 Catherine Schaefer**
Watercolor
2309 North Lake Blvd, Tahoe City
530-583-4082
One mile east of Tahoe City on left side of highway, and behind the Tamarac Lodge.
- A4 Lynn McGeever**
Fused Glass
3210 Polaris Road, Tahoe City
530-583-2113
From Highway 28 approx. 2 miles east of Tahoe City take Fabian Way to Village Road. Turn right. Go four blocks up to Polaris. Turn left. Third house on left.
- A5 Diane Hub**
Oil Painting
322 Edgelynn Way, Tahoe City
530-583-4670
Leaving Tahoe City on 28 east, travel 2 miles to Dollar Drive and turn right. Take your right on Observation then the first left on Mammoth Drive. Continue half a mile to Edgelynn, house is just ahead on the right.
- A6 Don Eagling**
Acrylic & Oil
2181 Bear Creek Drive, Alpine Meadows
530-583-8571
From Hwy 89 take Alpine Meadows Rd about 3 miles to left on Bear Creek Dr at Bear Creek Entrance #2. Keep left on Bear Creek Dr to 2181 on the right, about 2 blocks.

North Shore, Kings Beach Studios

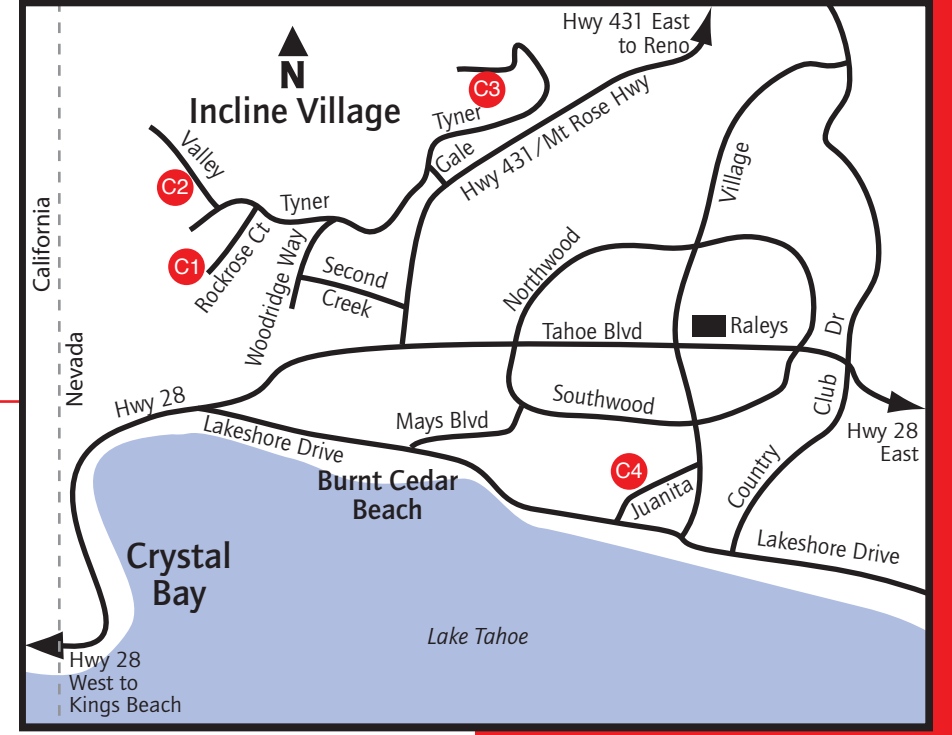
All studios open both weekends unless otherwise noted *

- B1 Randall Stauss**
Oils and Watercolors
5071 Nevada St, Carnelian Bay
530-546-4030
From Hwy 28, North Lake Blvd, turn north (away from lake) onto Center Street, across from Gar Woods Restaurant, go one block, turn right onto Nevada St, fourth house on the left side.
- B2 Jenny Antonucci**
Pastels and Watercolors
629 Midiron Ave, Kings Beach
530-525-5410
and
B3 Charlotte Patterson
Photography
629 Midiron Ave, Kings Beach
530-525-1992
and
B4 Heidi Reeves
Watercolor, Pastels
629 Midiron Ave, Kings Beach
530-546-4481
Please note that B2, B3 and B4 artists are all at the same location; see directions under B4
- B5 Nancy Louise Olson**
Multimedia Wearable Arts
8491 Brook St (upstairs), Kings Beach
530-308-0028
and
B6 Cathy McClelland
Acrylic
8491 Brook St (upstairs), Kings Beach
530-546-2210
From Hwy 28, North Lake Blvd, in Kings Beach, Turn north (away from lake) on Coon St. At first stop sign turn left on Brook St. Go halfway down street. Studio is on the right, upstairs in red building with green trim. Parking is to the left of building.
- B7 Catherine Strand • GlasRat Art Glass**
Kilnformed Glass
8580 Loch Levon Avenue, Kings Beach
530-546-6099
From Hwy 28, North Lake Blvd, in Kings Beach, Turn north (away from lake) on Coon St. Continue six blocks to Loch Levon. Turn left on Loch Levon. My studio is behind the third house on the left (8580)
- B8 Pamela Hunt Lee**
Acrylic, Watercolor, Semi-Precious Jewelry
8714 Brockway Vista Avenue, Kings Beach
775-848-8714
From Hwy 28, North Lake Blvd, in Kings Beach, turn south (towards the lake) onto Coon St. Turn left onto Brockway Vista Avenue. House on lake side of street.

Map B - North Shore, Kings Beach



Map C - Incline Village

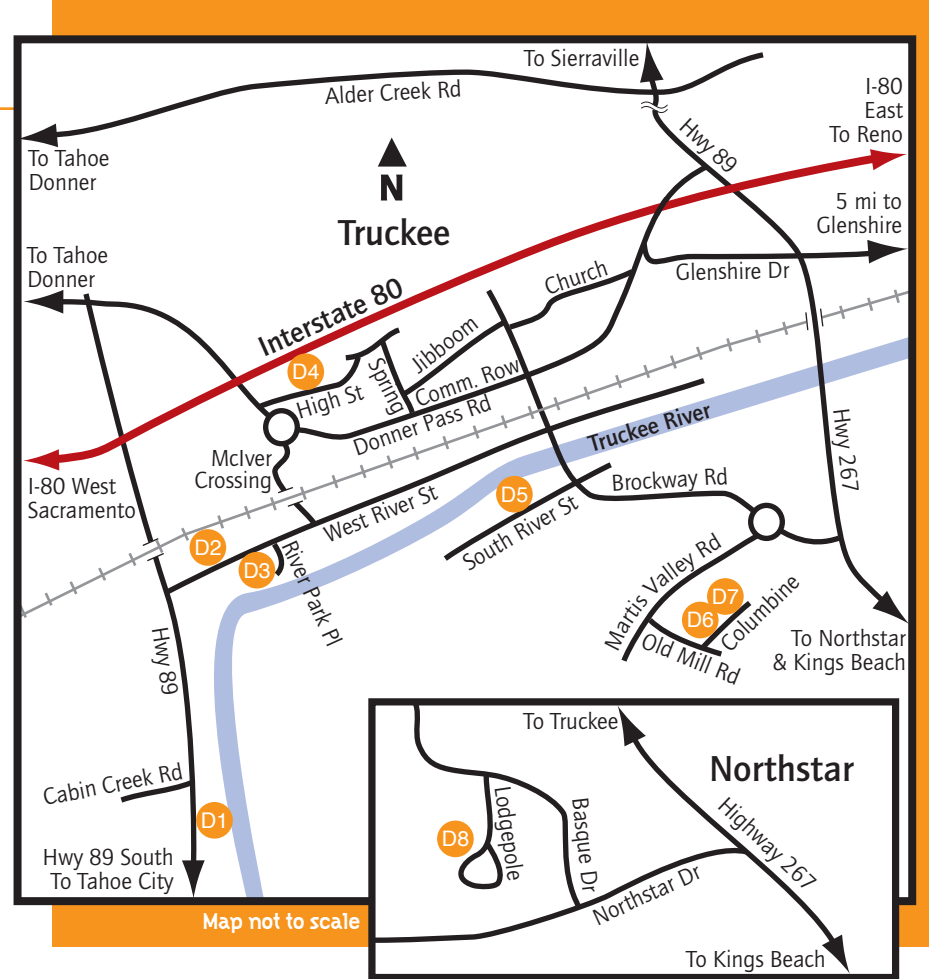


Incline Village Studios

All studios open both weekends unless otherwise noted *

- C1 Lawrence & Judith Romiti**
Romiti Art
594 Rockrose Court, Incline Village
775-833-1560
From Hwy 28, Tahoe Blvd, in Incline Village, turn onto Mt. Rose Highway 431. Turn left at Gale St. then left again on Tyner. The second left will be Rockrose Court—sign says, "No Outlet"
- C2 Bill Cooper & JoAnn Lippert**
Wild Encounters Photography
Photography
581 Valley Drive, Incline Village
775-831-4642 or 775-742-8831
From Highway 28, turn onto Mount Rose Hwy 431. Turn left onto Second Creek, turn right on Woodridge. Turn left on Tyner and turn right on Valley Drive. Third house on the left. From Reno: Take Mount Rose Hwy 431 toward Incline Village. From Mount Rose Hwy turn right onto Second Creek, turn right on Woodridge. Turn left on Tyner and turn right on Valley Drive. Third house on the left.
- C3 Donald R. Britton**
Oil
802 Tyner Way, Incline Village
775-833-1094
From Highway 431 (Mt. Rose Highway) turn north on Gale. In one block Gale ends at Tyner Way. Turn right on Tyner and follow the road for 0.9 miles. House will be on your left on a straight section of the road after the hairpin turn.
- C4 Robert Mimiaga**
Travel and Landscape Photography
150 Juanita Dr Unit 23
Incline Village
775-833-1124
From Hwy 28, Tahoe Blvd in Incline Village turn right (south towards the lake) on Village Blvd to Juanita Dr. Follow the signs turning right on Juanita Dr for about 150 feet to a private drive on your left. Proceed down the drive, staying to the left to Unit 23.

Map D - Truckee & Northstar



Truckee & Northstar Studios

All studios open both weekends unless otherwise noted *

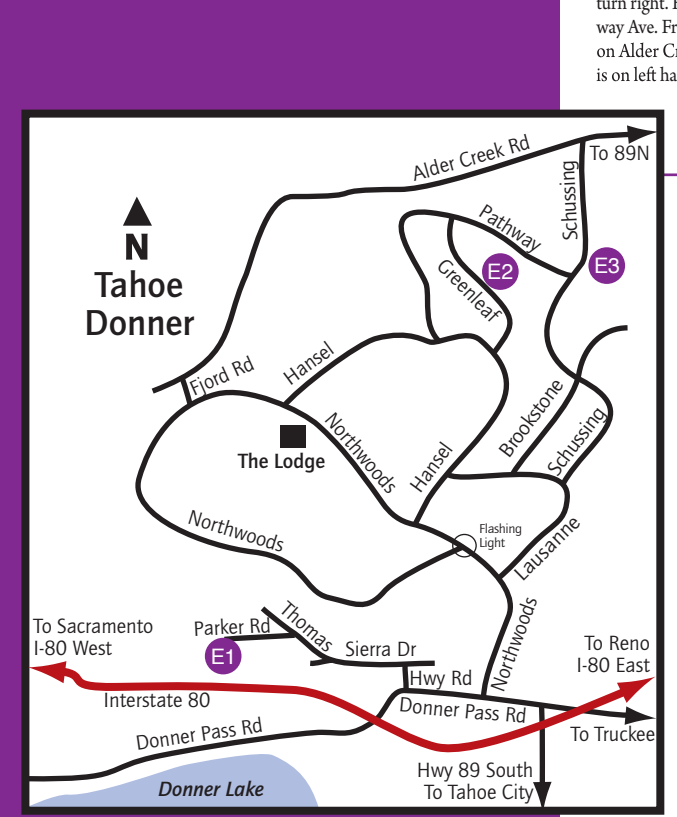
- D1 Jesse Martin**
Ceramics
8660 River Rd (Hwy 89 S), Truckee
530-550-8911
From Truckee head south on Highway 89 for three miles. One-quarter mile past Cabin Creek Rd, turn left into the driveway on the river side. From Tahoe City turn right one mile past Bridge 11.
- D2 Teresa Wik**
Pottery
11084 West River St., #4, Truckee
530-559-9773
From Hwy 89 turn on West River St., then turn at the big blue bull wheel. From downtown Truckee, use the traffic circle to West River St., turn right, and look for the bull wheel on your right.
- D3 Tom Beebe • Artistry in Wood**
Woodwork
10434 River Park Place, Suite B-2, Truckee
530-587-1108
West River Street runs parallel to the Truckee River connecting Highway 267 and Highway 89 in Truckee (south side of rail road tracks). River Park Place is a dead-end street off of West River Street. From West River Street, turn south onto River Park Place and follow it to its dead end. The Studio is in the industrial center at the dead end (right past Truckee Rents on the right).
- D4 Carole Sesko**
Acrylic and Mixed Media
10326 High Street, Truckee
530-587-7750
From the downtown roundabout on Donner Pass Road near I-80, turn uphill onto High Street. First house on left. Access the roundabout from West River Street by turning onto McIver Crossing.
- D5 Suzanne Smith**
Photography, Mixed Media
10050 South River Street, Truckee
530-587-0750
From downtown Truckee, head south on Brockway Road. Turn right on South River Street. First house on the right.
- D6 Susan Gross**
Printmaking
10262 Columbine Rd, Truckee
530-448-6123
and
D7 Deb Rose
Oil and/or Watercolors
10262 Columbine Road, Truckee
530-587-3392
From Brockway Road, (Old Hwy 267), at roundabout in front of The Rock shopping center, turn west on Martis Valley Rd., take first left after the stop sign on Old Mill Rd., then first left on Columbine Rd. House is about three blocks up.
- D8 Carol David**
Pastels
Open First Weekend Only
1435 Lodgepole, Northstar
209 480 2175
Hwy. 267 between Truckee and King's Beach: turn onto Northstar Drive. Turn right on Basque. Next, turn left onto Lodgepole. This street is a half circle and comes back to Basque.

Tahoe Donner Area Studios

All studios open both weekends unless otherwise noted *

- E1 Carol Tomasic**
Stained Glass
12715 Parker Rd.
530-550-0337
From Truckee Safeway, travel west on Donner Pass Rd. through 2 stoplights, turn right on Highway Rd. (look for Smokey's Kitchen). Turn left on Sierra Drive. Keep going uphill on to Thomas at the fork in road, turn left onto Parker Rd. at top of hill. From the top, it's the last house on the left. (Red House)
- E2 Audrey Dygert**
Watercolor
Open First Weekend Only
12397 Greenleaf Way
530-587-7624
From downtown Truckee, go west on Donner Pass Road. Turn right on Northwoods Blvd. Go uphill, past Clubhouse, turn right on Hansel. Go about 1-1/2 miles, turn right on Greenleaf Way, go up slight hill, house is on right.
- E3 Scott Thompson**
Photography
12297 Schussing Way
530-277-7890
From Donner Pass Road, go up Northwoods Blvd. to Lausanne Way and turn right. To Schussing Way and turn right. House is on right hand side, just past Pathway Ave. From Hwy 89, north of Truckee, turn west on Alder Creek Road. Left on Schussing Way. House is on left hand side, just past Telemark Place.

Map E - Tahoe Donner Area



Map F - Glenshire



Glenshire Studios

All studios open both weekends unless otherwise noted *

- F1 Dayna Galletti**
Ceramic
14895 Martis Peak Road
530-587-8758
Take I-80 to exit 194 Hirschdale Rd. Turn right on Hirschdale. Go 0.7 miles, bear right on Glenshire Drive. Go 1 mile, turn left at Martis Peak Road. At the gate enter #8910 (press the # key then 8-9-1-0) or scan to Mandeville and press "call".
- F2 Cherie Keep**
Glass Studio
15599 Sudsbury Circle, Glenshire
530-550-8530
From Donner Pass Road in Truckee turn onto Glenshire Dr. Go approx. 5 miles, turn left on Dorchester, right on Sudsbury Circle.
- F3 Fred Noerdlinger**
Watercolor and Mixed Media
10389 Saint James Pl, Glenshire
530-582-9565
From Donner Pass Road in Truckee turn onto Glenshire Dr. Go approx. 5 miles, turn right at Somerset, right at Windsor, and right at Saint James Place.

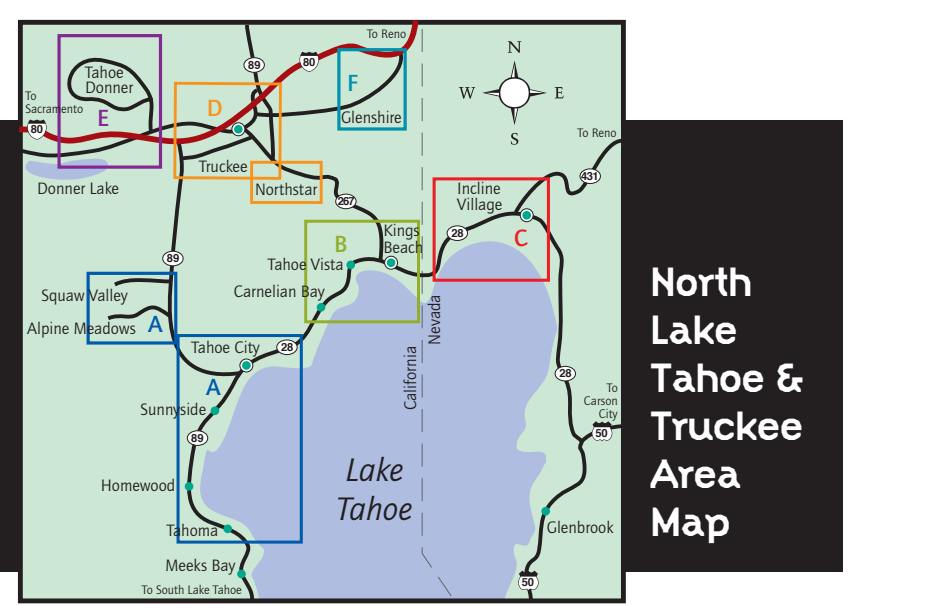
The mission of North Tahoe Arts is to support the arts in the North Tahoe and Truckee communities through exposure, education, and participation.



North Tahoe Arts
P.O. Box 6354
Tahoe City, CA 96145

North Tahoe Art Center
380 North Lake Blvd
Tahoe City, California

Phone: 530-581-ARTS (530-581-2787)
Fax: 530-581-2747
www.norhtahoearts.com



North Tahoe Arts
Tahoe ARTour 2009
P.O. Box 6354
Tahoe City, CA 96145



Non-Profit Organization
U.S. Postage
PAID
Tahoe City, CA 96145
Permit No. 23